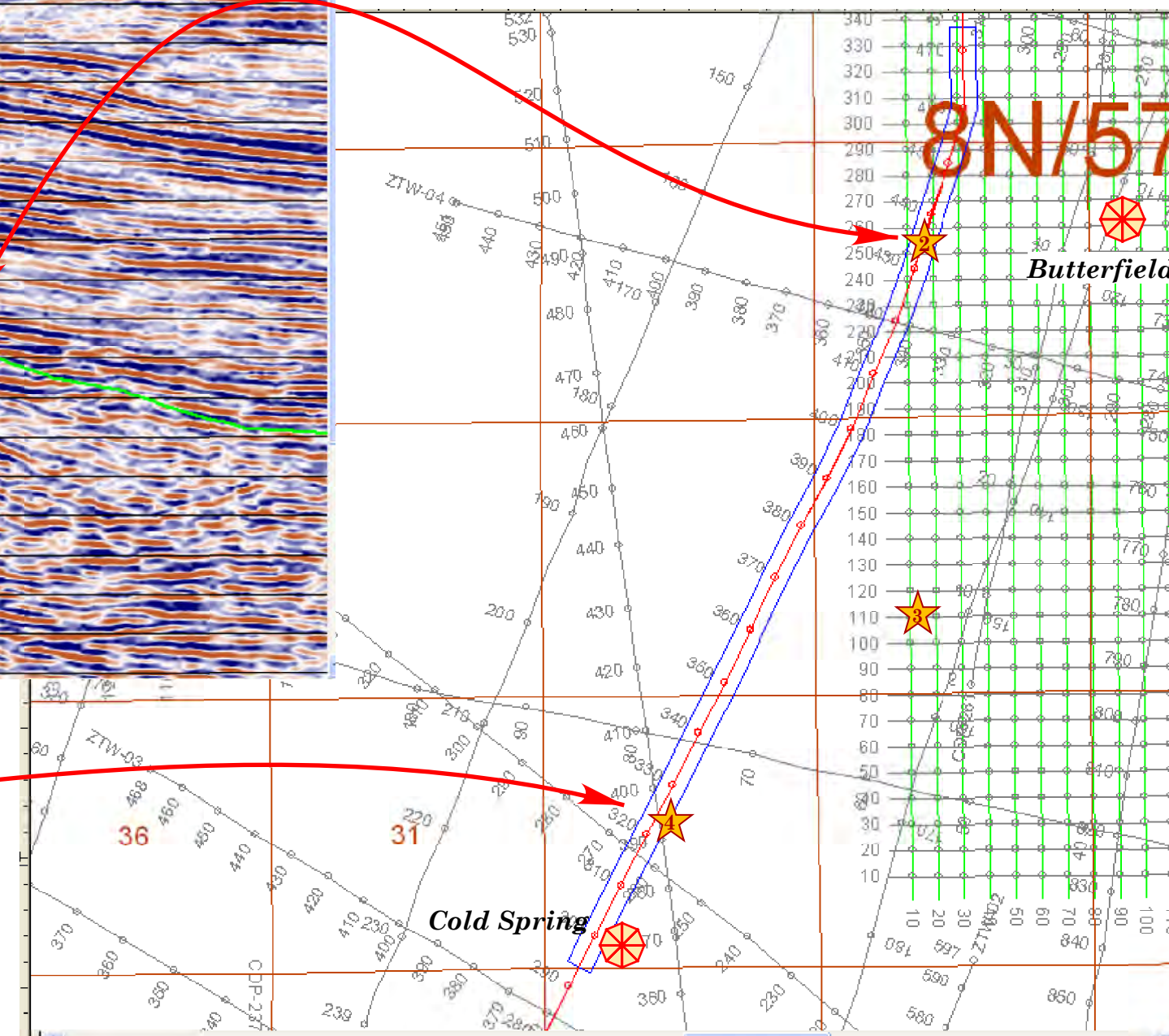


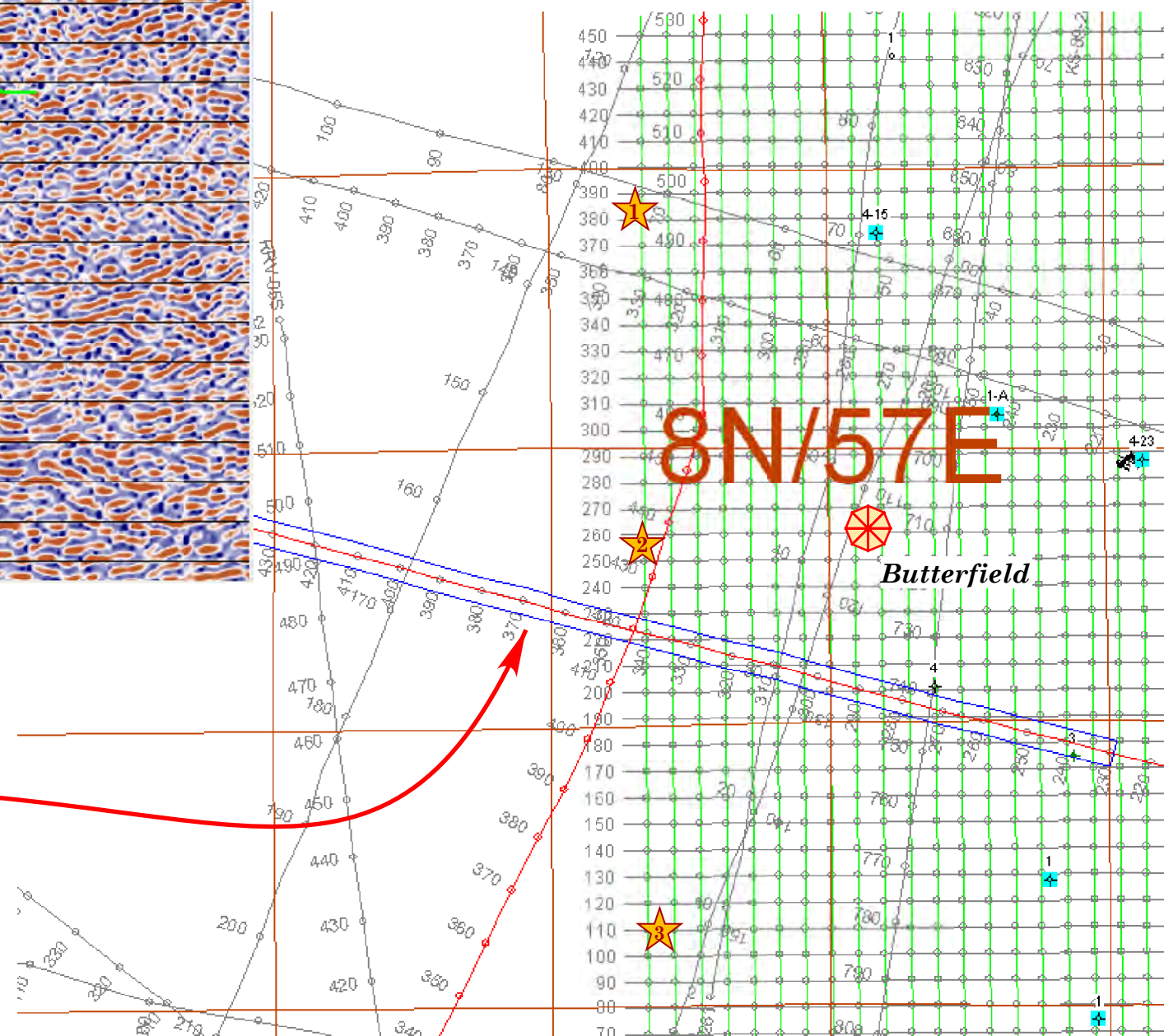
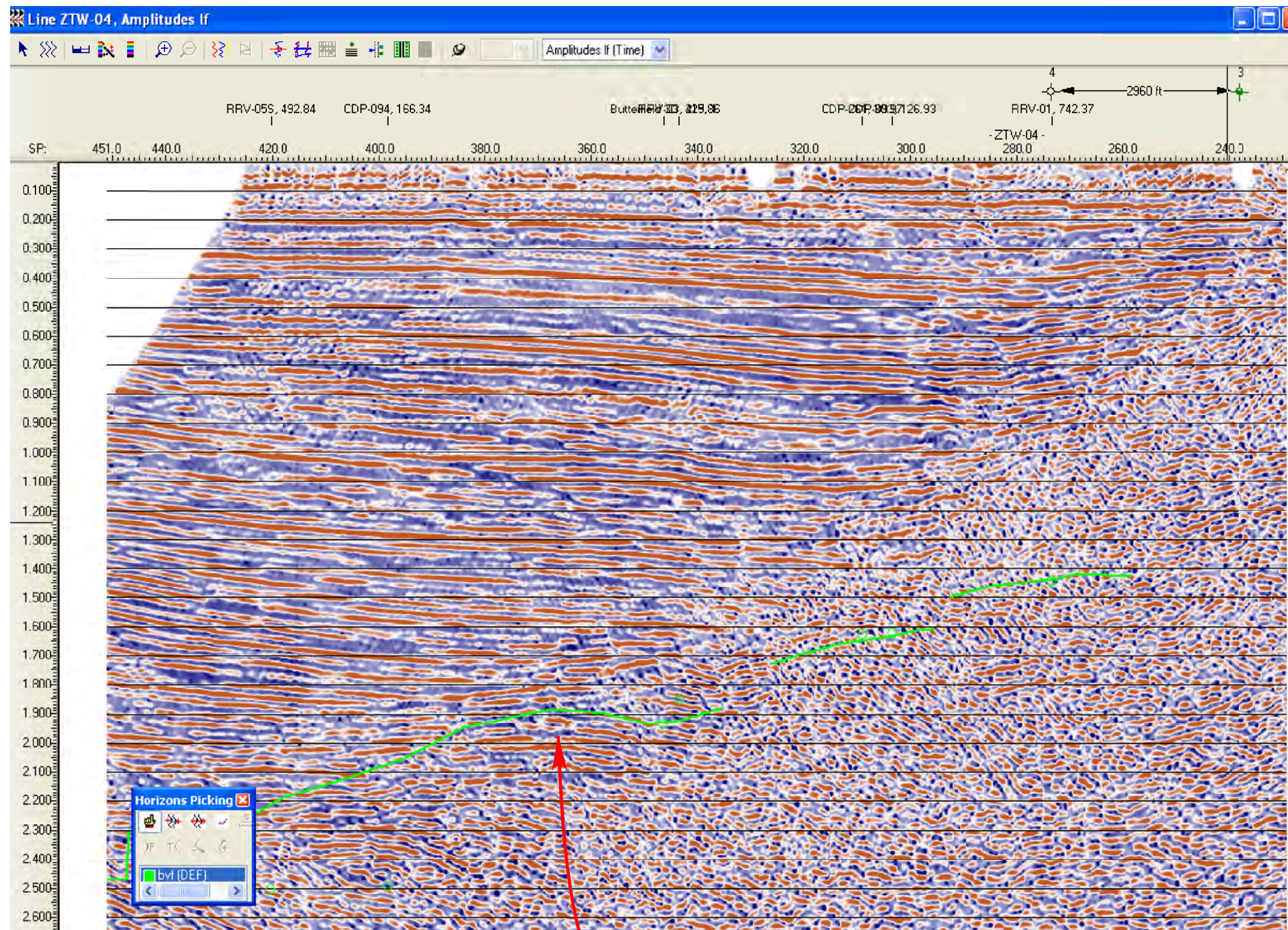
Lead 2 is a structure present in the floor of the basin. It is present on the Butterfield 3D survey and on the reprocessed version of ZTW-04. It has seismic characteristics similar to Grant Canyon, and may be an extension of the Butterfield slide block.

Lead 4 is a northern extension of Cold Spring Prospect, previously documented in the Railroad Valley Prospect Book.



The bvf horizon marked on the seismic profiles is new interpretation.





Lead 2 can be identified on the reprocessed version of ZTW-04, shown here. It is more difficult to identify on the original version of this line.